

Secret Life: Lot 57



LOT DEVELOPMENT

- **Min.** dimensions at ground level for build: 65 m²
- **Max.** dimensions at ground level for build: 4 % of lot surface area
- Maximum tree clearing: 5x the residence footprint

For more info, consult our [landscape and construction criteria](#)

LOT DESCRIPTION

- Lot size (pi²): 247,180
- Lot size (m²): 22,963.6
Lots sizes can vary
- Superb view of private fishing lakes
- Very large lot, beautiful plateau with mature trees, close to Ranch Mont Tremblant.

CHARACTERISTICS OF PROJECT

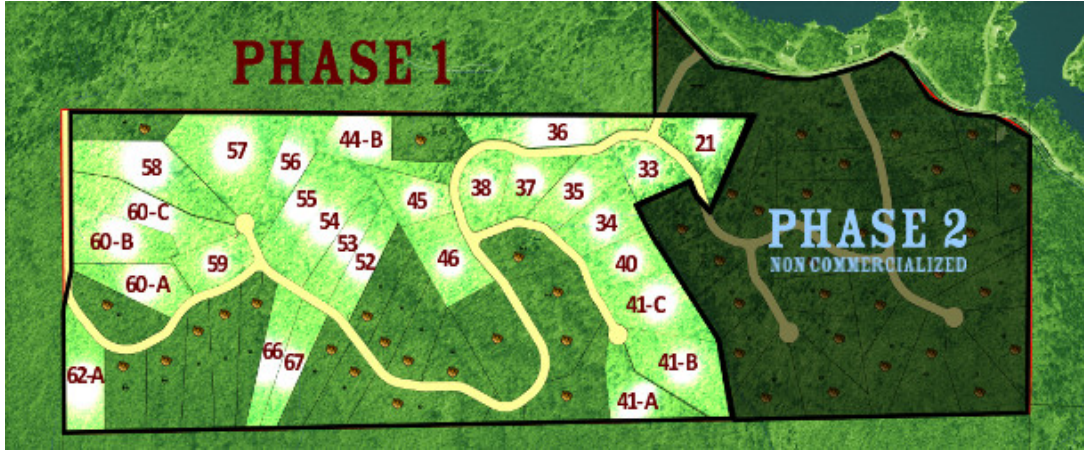
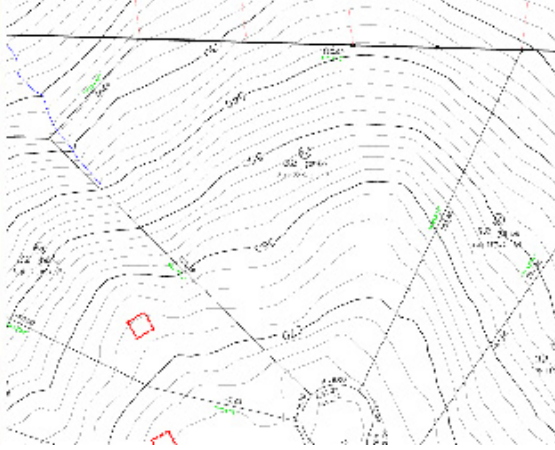
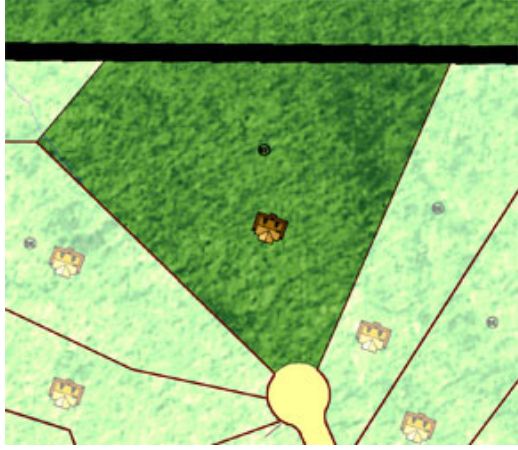
- The majority of lots have magnificent views of the surrounding mountains
- Lots of 2 acres and more (8,000 m² plus)
- Access to 3 private fishing lakes
- Tree species: maple, birch, wild cherry, beech, fir
- Ranch Mont Tremblant : property owners will become exclusive members of the [Clubhouse Ranch Mont Tremblant](#); Inn, spa, sauna, horseback riding, snowshoe, private fishing club.
- To come: cross country skiing and skating rink.

PROJECT DEVELOPMENT

- Electric gate with rock columns
- Developed roads
- Private entrance to each lot (15m)
- Electricity phase 1: 2011/2012
- High speed internet access

- Landscaped entrance to project

Lot plan #57, in order: illustration, technical map, general map



DEVELOPPED & COMMERCIALIZED BY

