

Port d'Attache Phase 2 : Lot 29



LOT DEVELOPMENT

- **Min.** dimensions at ground level for build: 65 m²
- **Max.** dimensions at ground level for build: 4 % of lot surface area
- Maximum tree clearing: 5x the residence footprint

For more info, consult our [landscape and construction criteria](#)

LOT DESCRIPTION

- Lot size (pi²): 43,161.1
- Lot size (m²): 4,009.8
- Lots sizes can vary*
- View: forested
- Attraction: access to navigable lake via park.

CHARACTERISTICS OF PROJECT

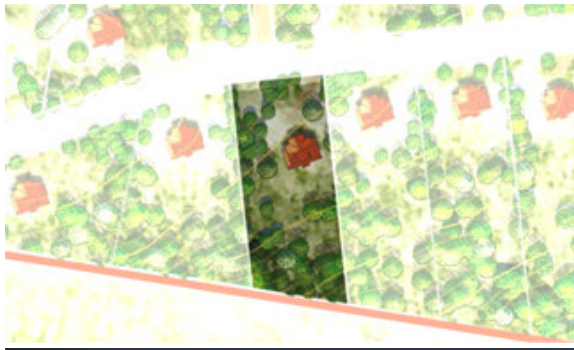
- Access to Lake Quenouille, navigable, 2nd largest lake in the Mont Tremblant region
- Common park access to lake; dock, belvedere and boat cabin for small boats
- Magnificent views onto Lake Quenouille and the surrounding mountains
- Tree species: maple, birch, wild cherry, beech, fir
- Ranch Mont Tremblant : property owners will become exclusive members of the [Clubhouse Ranch Mont Tremblant](#); Inn, spa, sauna, horseback riding, snowshoe, private fishing club.

To come: cross country skiing and skating rink.

PROJECT DEVELOPMENT

- Electric gate with rock columns
- Developed roads
- Private entrance to each lot (15m)
- Landscaped entrance to project
- Electricity phase 1: Installed
- Electricity phase 2: 2011/2012
- High speed internet access

Lot plan #29, in order: illustration, technical map, general map



DEVELOPPED & COMMERCIALIZED BY



développements
TREMBLANT NORD